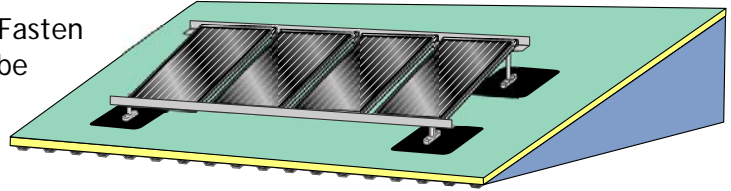


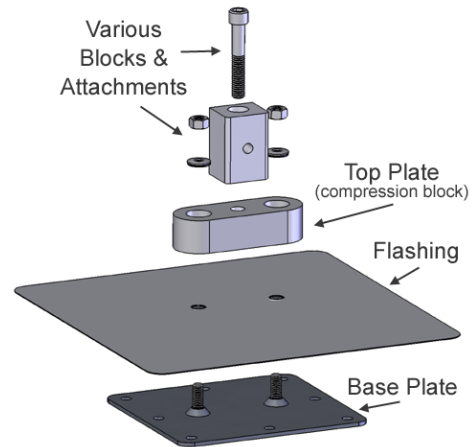
Eco-Fasten™ Universal Roof Attachment Bracket Installation Instructions for Membrane and Other Flat Roofs

- Determine the type of roof that the Eco-Fasten Universal Roof Attachment bracket is to be installed on:

- EPDM
- TPO
- Vinyl
- Torch Applied (Modified) membrane
- Hot Tar
- Other



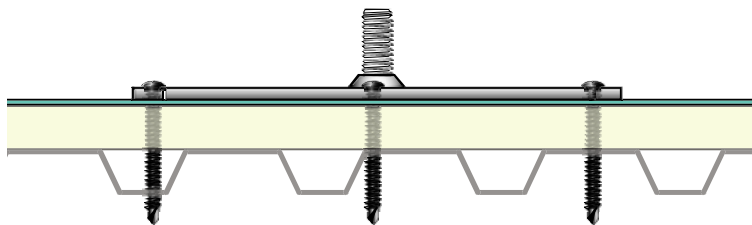
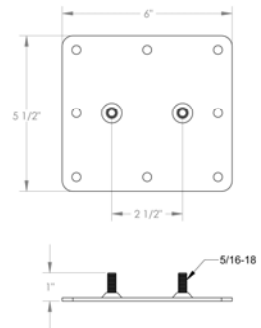
- Determine the roof construction, i.e.,
 - roofing material over insulation, over steel deck
 - roofing material over insulation, over wood deck
 - roofing material over insulation, over concrete deck
 - roofing material over wood deck only
 - roofing material over concrete deck only
 - roofing material over recovery board, insulation, and wood, concrete, or metal
 - other



- Choose appropriate fastener to work in conjunction with given roof construction. EcoFasten has tested fasteners for use with steel and wood decks. Those test results are available on our website www.Eco-Fasten.com. Fasteners for concrete and other decks will need to be determined by the project engineer.

Installation Instructions

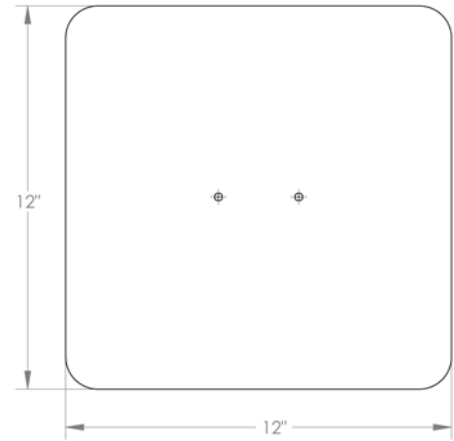
- Base Plate (The base plate is the flat piece with the two threaded studs.)
 - The base plate is 6" long and 5.5" wide.
 - Place the base plate on top of the finished membrane roof. Align the base plate so that the studs are oriented in the desired direction for application of desired top plate.
 - Install 8 fasteners through the holes in the perimeter of the base plate.



Eco-Fasten™ - Universal Roof Attachment System
Attachments secure, roof intact.

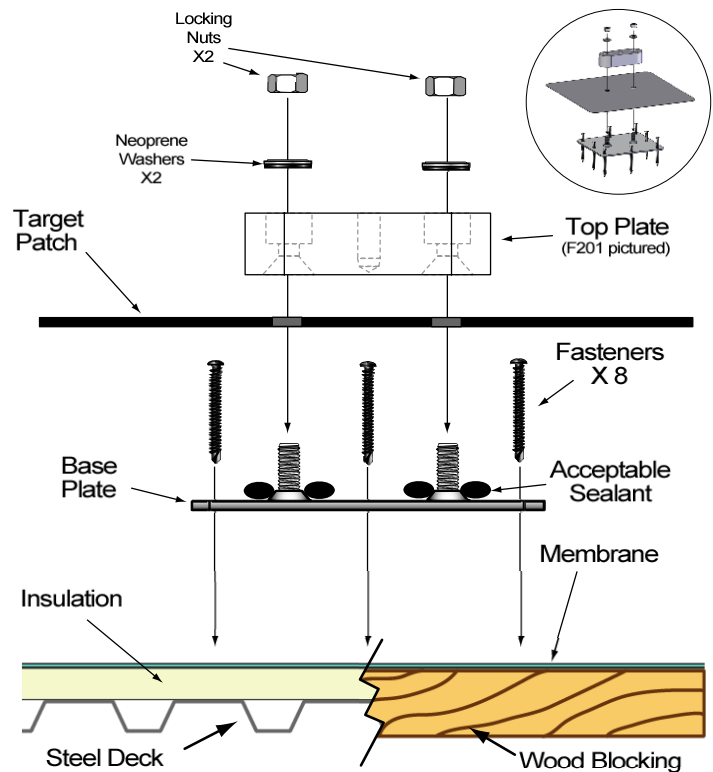
II. Base Plate Counter Flashing (Target Patch)

- A. Use an acceptable piece of flashing material at least 10" square. (Target Patch). Consult roof material manufacturer for confirmation of minimum target patch size.
- B. Cut two small holes in target patch such that when installed it will fit tightly over threaded studs and be centered over base plate.
- C. Before installing target patch apply a generous amount of acceptable sealer around threaded rods.
- D. Apply target patch over base plate using proper mastics or welding installation techniques (varies with type of roofing material) so as to create a water tight patch.
- E. The threaded studs are now the only part of the base plate exposed. NOTE: Due to the sealer applied around the studs there may be "bleed out" at the openings. When the base block is installed and tightened this "bleed out" will help to create a water tight compression fitting.



III. Installation of Eco-Fasten Universal Roof Attachment Bracket (Top Plate)

- A. Install Eco-Fasten Universal Roof Attachment Bracket over threaded studs. The Eco-Fasten Universal Roof Attachment Bracket will be centered on the base plate when installed properly.
- B. Place one gasketed washer over each stud.
- C. Place locking nut over gasketed washer and tighten.



IV. Proceed with installation of desired mechanical or structural components.

Note: Typical roof insulation has a compressive load value of 20 psi. Each "standard" EcoFasten base plate (consult manufacturer for options) is 33 square inches. This means that each EcoFasten assembly when installed over typical roof insulation alone will support an ultimate compressive load 660 pounds. For design purposes do not exceed 500 pounds per "standard" assembly.

Eco-Fasten™ - Universal Roof Attachment System
Attachments secure, roof intact.

Eco-Fasten™ Universal Roof Attachment Bracket Installation Instructions for Membrane and Other Flat Roofs

1. Determine the type of installation, the number of base plates, fasteners and attachments needed.
2. Use the right fastener for the roof and deck you are working with. Eco-Fasten has tested fasteners for use with steel and wood decks. Those test results are available on our website www.Eco-Fasten.com. Fasteners for concrete and other decks will need to be determined by the project engineer. Be sure the fasteners are long enough to penetrate the deck.



3. Use 8 fasteners per base plate.



Eco-Fasten™ - Universal Roof Attachment System
Attachments secure, roof intact.

4. Use a cleaner recommended by the roof manufacturer to clean the area around the Eco-Fasten base plate.



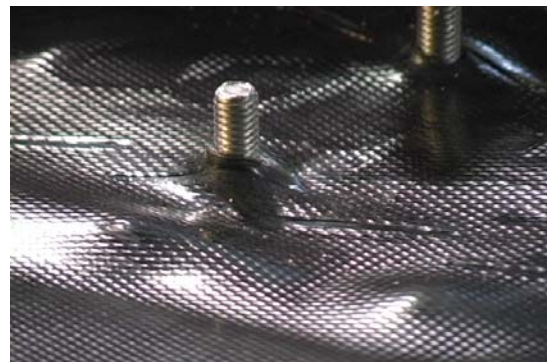
5. Apply sealant around the bolts on the base plate and use a peel and stick flashing or make your own from a compatible material.



6. Apply target patch over base plate using proper mastics or welding installation techniques (varies with type of roofing material) so as to create a water tight patch.



7. The threaded studs are now the only part of the base plate exposed. NOTE: Due to the sealer applied around the studs there may be "bleed out" at the openings.



Eco-Fasten™ - Universal Roof Attachment System
Attachments secure, roof intact.

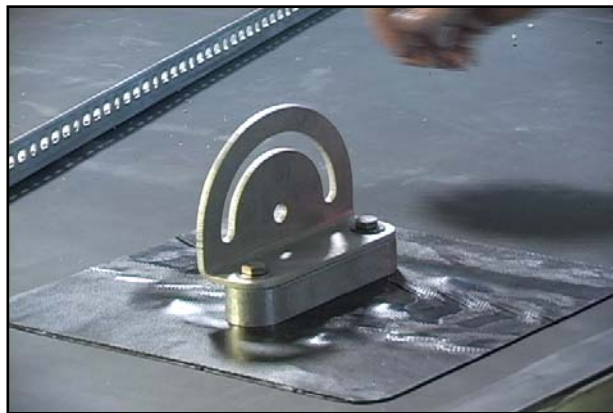
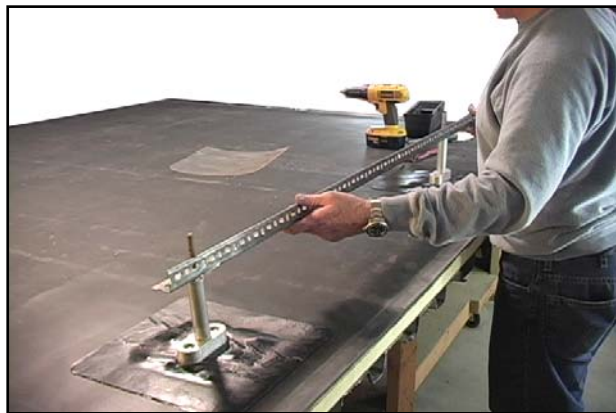
8. Install the Top Plate bracket. When the Top Plate is installed and tightened this “bleed out” will help to create a water tight compression fitting.



9. Use two neoprene bonded washer and nuts to secure the Top Plate to the base plate.



10. Proceed with installation of desired mechanical or structural components



Eco-Fasten™ - Universal Roof Attachment System
Attachments secure, roof intact.